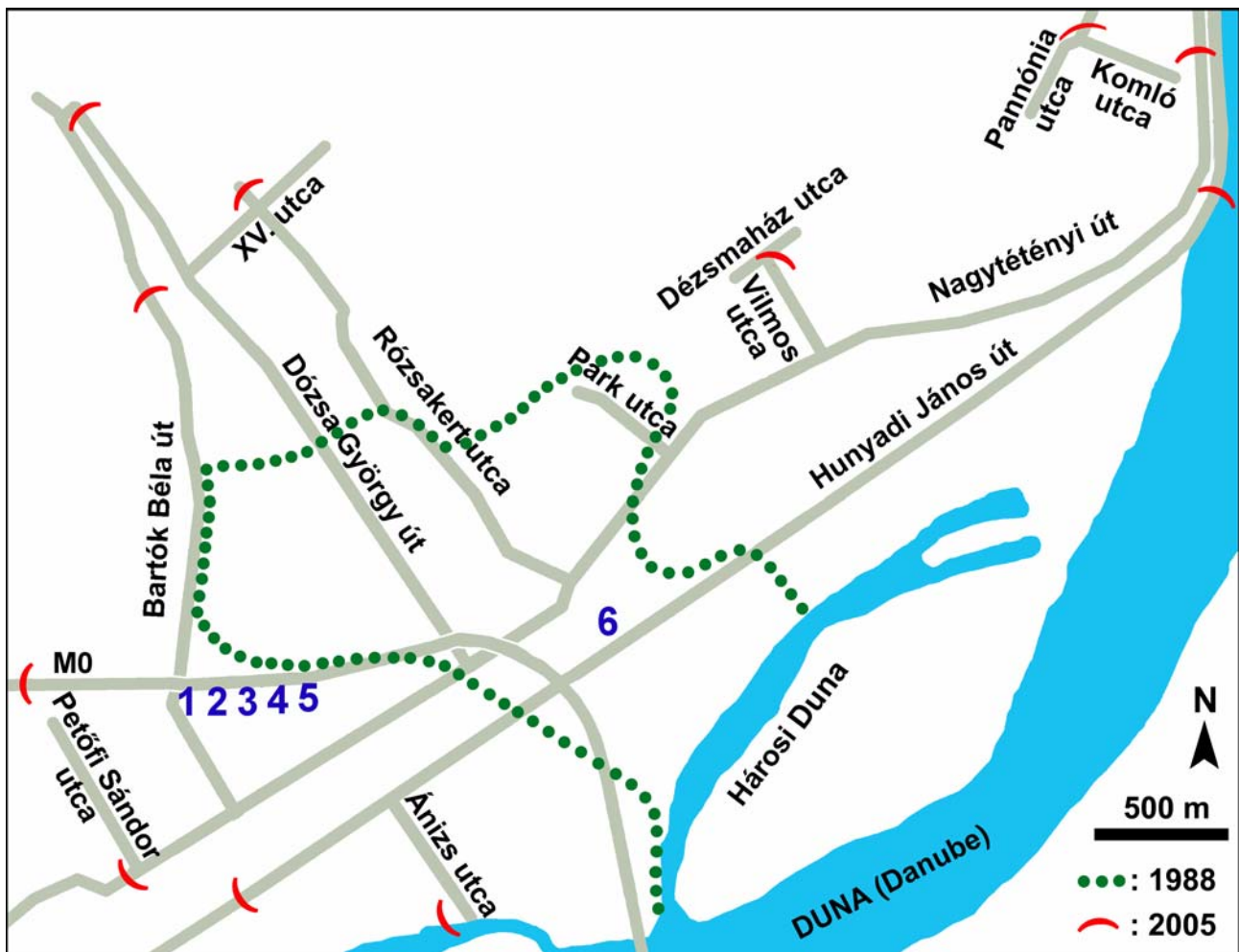


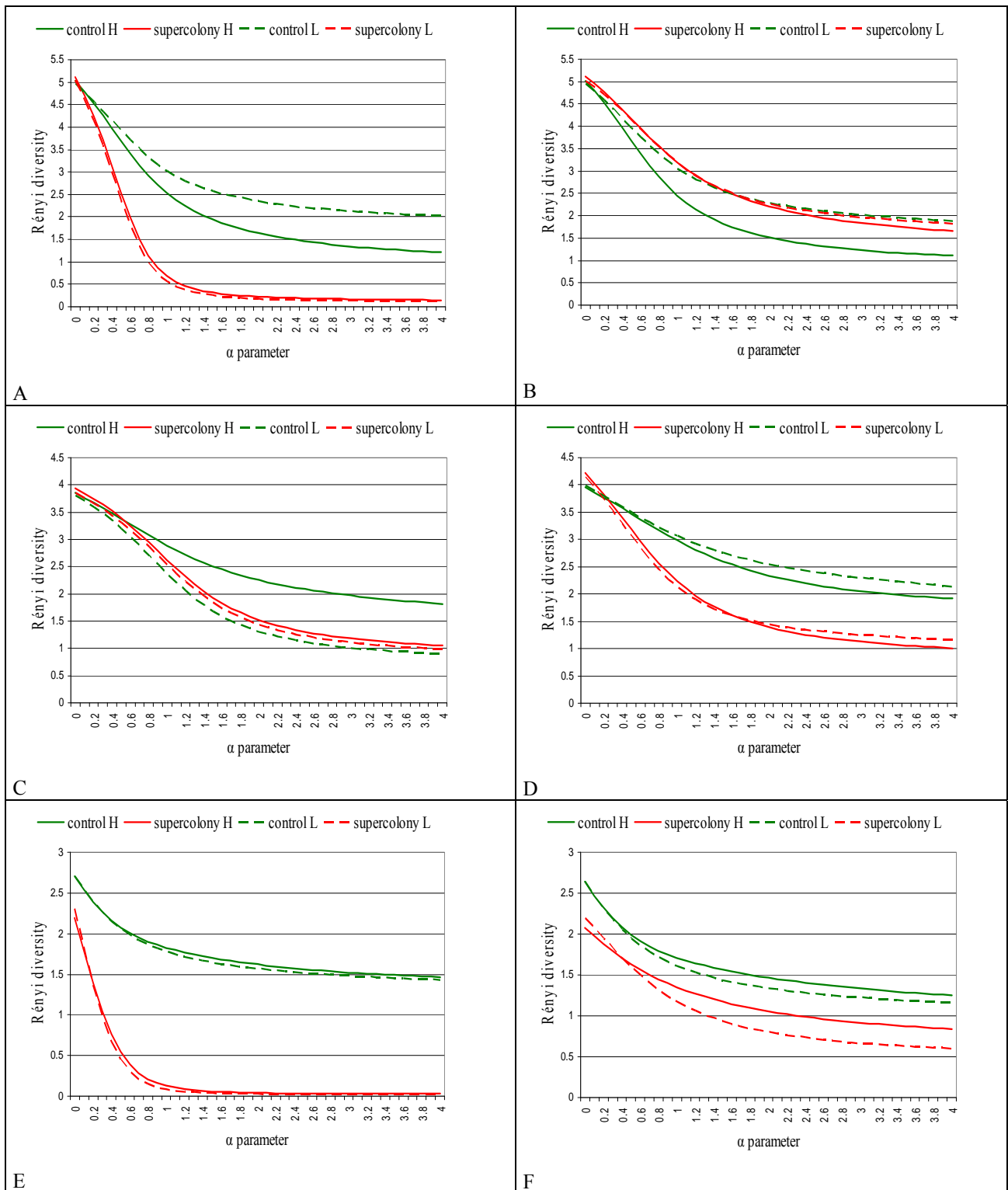
Digital supplementary material to

NAGY, C., TARTALLY, A., VILISICS, F., MERKL, O., SZITA, É., SZÉL, GY., PODLUSSÁNY, A., RÉDEI, D., CSŐSZ, S., POZSGAI, G., OROSZ A., SZÖVÉNYI, G. & MARKÓ, V. 2009: Effects of the invasive garden ant, *Lasius neglectus* VAN LOON, BOOMSMA & ANDRÁSFALVY, 1990 (Hymenoptera: Formicidae), on arthropod assemblages: pattern analyses in the type supercolony. – Myrmecological News 12: 171-181.

Appendix 1: The control (1 - 3) and the supercolony (4 - 6) sites in Budatétény (Budapest, Hungary). The ca. borders of the supercolony in 1988 are given according to VAN LOON & al. (1990; see References in the paper) and the expansion along some roads up to 2005 according to our survey (see also ESPADALER & al. 2007). The last *Lasius neglectus* entrances were in half way between 3 and 4 during the trapping in 2002 but some workers were found in the samples of the control sites, too (see Appendix 4 and the paper). Site 6 was in similar vegetation to 1 - 5 but farther in the centre of the supercolony (see also the paper).



Appendix 2: Rényi diversity profiles based on the pitfall trap data of (A) all identified species, (B) all identified species, *L. neglectus* excluded, (C) Araneae species, (D) Coleoptera species (Staphylinidae excluded), (E) Formicidae species, and (F) Formicidae species, *L. neglectus* excluded (H: high plant coverage, L: low plant coverage).



Appendix 3A: Comparisons of Rényi diversity values based on the data of all identified species in the control and supercolony sites at different α scale parameters. H: high plant coverage; L: low plant coverage, ** P < 0.01. See also Appendix 2A.

	α	0.1	1	2	3	4
Control H (1) – Supercolony H (2)	t-value	8.83	65.30	54.92	48.17	46.43
	significance	1 > 2**	1 > 2**	1 > 2**	1 > 2**	1 > 2**
Control L (3) – Supercolony L (4)	t-value	18.86	80.95	81.55	71.57	62.97
	significance	3 > 4**	3 > 4**	3 > 4**	3 > 4**	3 > 4**

Appendix 3B: Comparisons of Rényi diversity values based on the data of all identified species, *L. neglectus* excluded, in the control and supercolony sites at different α scale parameters. H: high plant coverage, L: low plant coverage, * P < 0.05, ** P < 0.01. See also Appendix 2B.

	α	0.1	1	2	3	4
Control H (1) – Supercolony H (2)	t-value	20.09	16.17	13.92	12.19	11.68
	significance	1 < 2**	1 < 2**	1 < 2**	1 < 2**	1 < 2**
Control L (3) – Supercolony L (4)	t-value	12.17	2.52	0.53	0.99	1.04
	significance	3 < 4**	3 < 4*	3 = 4	3 = 4	3 = 4

Appendix 3C: Comparisons of Rényi diversity values of Araneae species in the control and supercolony sites at different α scale parameters. H: high plant coverage, L: low plant coverage, ** P < 0.01. See also Appendix 2C.

	α	0.1	1	2	3	4
Control H (1) – Supercolony H (2)	t-value	5.88	1.94	4.54	5.08	4.99
	significance	1 < 2**	1 = 2	1 > 2**	1 > 2**	1 > 2**
Control L (3) – Supercolony L (4)	t-value	4.49	1.27	0.96	0.90	0.89
	significance	3 < 4**	3 = 4	3 = 4	3 = 4	3 = 4

Appendix 3D: Comparisons of Rényi diversity values of Coleoptera species (Staphylinidae excluded) in the control and supercolony sites at different α scale parameters. H: high plant coverage, L: low plant coverage, ** P < 0.01. See also Appendix 2D.

	α	0.1	1	2	3	4
Control H (1) – Supercolony H (2)	t-value	14.04	9.14	9.42	9.41	9.53
	significance	1 < 2**	1 > 2**	1 > 2**	1 > 2**	1 > 2**
Control L (3) – Supercolony L (4)	t-value	4.15	12.49	12.39	9.93	8.47
	significance	3 < 4**	3 > 4**	3 > 4**	3 > 4**	3 > 4**

Appendix 3E: Comparisons of Rényi diversity values of Formicidae species in the control and supercolony sites at different α scale parameters. H: high plant coverage, L: low plant coverage, ** P < 0.01. See also Appendix 2E.

	α	0.1	1	2	3	4
Control H (1) – Supercolony H (2)	t-value	44.52	75.86	62.72	54.78	51.54
	significance	1 > 2**	1 > 2**	1 > 2**	1 > 2**	1 > 2**
Control L (3) – Supercolony L (4)	t-value	43.24	86.16	79.54	66.60	56.27
	significance	3 > 4**	3 > 4**	3 > 4**	3 > 4**	3 > 4**

Appendix 3F: Comparisons of Rényi diversity values of Formicidae species, *L. neglectus* excluded, in the control and supercolony sites at different α scale parameters. H: high plant coverage, L: low plant coverage, ** P < 0.01. See also Appendix 2F.

	α	0.1	1	2	3	4
Control H (1) – Supercolony H (2)	t-value	26.33	6.73	6.25	5.85	5.68
	significance	1 > 2**	1 > 2**	1 > 2**	1 > 2**	1 > 2**
Control L (3) – Supercolony L (4)	t-value	21.65	6.50	7.99	8.60	8.81
	significance	3 > 4**	3 > 4**	3 > 4**	3 > 4**	3 > 4**

Appendix 4: The list and summed abundance of arthropod species / taxa found in the control and supercolony sites; names of persons who undertook identifications given.

Taxa	Control	Supercolony
MYRIAPODA		
CHILOPODA (det. László Dányi)		
LITHOBIOMORPHA		
LITHOBIIDAE		
<i>Lithobius crassipes</i> L. KOCH, 1862	1	1
<i>Lithobius forficatus</i> (LINNAEUS, 1758)	2	1
<i>Lithobius mutabilis</i> L. KOCH, 1862	40	30
<i>Lithobius muticus</i> C.L. KOCH, 1847	1	2
<i>Lithobius</i> sp. larva	5	1
SCOLOPENDROMORPHA		
CRYPTOPIDAE		
<i>Cryptops parisi</i> BRÖLEMANN, 1920	1	–
DIPLOPODA		
JULIDA		
Julida total	70	20
POLYDESMIDA		
Polydesmida total	5	–
PSEUDOSCORPIONES		
Pseudoscorpiones sp. 1	2	–
OPILIONES (det. Dániel Lengyel Gábor)		
PALPATORES		
Palpatores sp. (all juvenile)	22	4
NEMASTOMATIDAE		
<i>Carinostoma elegans</i> (SØRENSEN, 1894)	18	–
PHALANGIIDAE		
Phalangiidae sp.	1	–
<i>Opilio saxatilis</i> C.L. KOCH, 1839	2	–
<i>Opilio</i> sp.	14	1
<i>Zachaeus crista</i> (BRULLÉ, 1832)	–	2
SCLEROSOMATIDAE		
<i>Nelima sempronii</i> SZALAY, 1951	3	–
TROGULIDAE		
<i>Trogulus tricarinatus</i> (LINNAEUS, 1767)	–	1
ACARI		
Acari other total	140	193
ORIBATIDA		
Oribatida total	276	1065
PROSTIGMATA		
TROMBIDIOIDEA		
Trombidioidea total	445	308
IXODIDA		
Ixodida sp. 1	6	1
ARANEAE (det. Éva Szita)		
Araneae sp.	–	1
AGELENIDAE		
Agelenidae sp.	1	–
AMAUROBIIDAE		
<i>Urocoras longispinus</i> (KULCZYNSKI, 1897)	1	–
CLUBIONIDAE		
Clubionidae sp.	–	1
<i>Clubiona pseudoneglecta</i> WUNDERLICH, 1994	–	1
<i>Clubiona terrestris</i> WESTRING, 1851	–	1
CORINNIDAE		
<i>Phrurolithus festivus</i> (C.L. KOCH, 1835)	29	19

DICTYNIDAE		
<i>Argenna subnigra</i> (O.P. CAMBRIDGE, 1861)	2	–
<i>Cicurina cicur</i> (FABRICIUS, 1793)	–	1
DYSDERIDAE		
<i>Harpactea rubicunda</i> (C.L. KOCH, 1838)	10	16
GNAPHOSIDAE		
Gnaphosidae sp.	25	14
<i>Drassodes</i> sp.	2	1
<i>Drassodes lapidosus</i> (WALCKENAER, 1802)	3	3
<i>Drassodes pubescens</i> (THORELL, 1856)	–	1
<i>Drassodes villosus</i> (THORELL, 1856)	1	–
<i>Drassyllus praeficus</i> (L. KOCH, 1866)	6	5
<i>Drassyllus pusillus</i> (C.L. KOCH, 1833)	6	8
<i>Haplodrassus</i> sp.	9	3
<i>Haplodrassus minor</i> (O.P. CAMBRIDGE, 1879)	–	1
<i>Haplodrassus signifer</i> (C.L. KOCH, 1839)	4	1
<i>Micaria</i> sp.	1	–
<i>Micaria dives</i> (LUCAS, 1846)	1	9
<i>Micaria albovittata</i> (LUCAS, 1846)	5	8
<i>Phaeoedus braccatus</i> (L. KOCH, 1866)	–	1
<i>Trachyzelotes pedestris</i> (C.L. KOCH, 1837)	14	2
<i>Zelotes</i> sp.	15	23
<i>Zelotes apricorum</i> (L. KOCH, 1876)	2	8
<i>Zelotes aurantiacus</i> MILLER, 1967	1	10
<i>Zelotes electus</i> (C.L. KOCH, 1839)	5	8
<i>Zelotes gracilis</i> (CANESTRINI, 1868)	2	1
<i>Zelotes latreillei</i> (SIMON, 1878)	3	10
<i>Zelotes longipes</i> (L. KOCH, 1866)	5	2
HAHNIIDAE		
<i>Hahnia nava</i> (BLACKWALL, 1841)	4	32
LINYPHIIDAE		
Linyphiidae sp.	26	26
<i>Araeoncus humilis</i> (BLACKWALL, 1841)	–	2
<i>Bathyphantes gracilis</i> (BLACKWALL, 1841)	–	1
<i>Centromerus sylvaticus</i> (BLACKWALL, 1841)	2	2
<i>Dicymbium nigrum</i> (BLACKWALL, 1834)	–	1
<i>Diplostyla concolor</i> (WIDER, 1834)	24	–
<i>Linyphia triangularis</i> (CLERCK, 1757)	1	–
<i>Mecopisthes peusi</i> WUNDERLICH, 1972	10	9
<i>Meioneta rurestris</i> (C.L. KOCH, 1836)	5	14
<i>Meioneta simplicitarsis</i> (SIMON, 1884)	3	2
<i>Micrargus subaequalis</i> (WESTRING, 1851)	1	–
<i>Palliduphantes pillichii</i> (KULCZYNSKI, 1915)	3	2
<i>Sintula spiniger</i> (BALOGH, 1935)	1	5
<i>Syedra gracilis</i> (MENGE, 1869)	4	–
<i>Trichoncus hackmani</i> MILLIDGE, 1956	1	–
<i>Trichopterna cito</i> (O.P.-CAMBRIDGE, 1872)	6	8
<i>Walckenaeria alticeps</i> (DENIS, 1952)	1	12
<i>Walckenaeria capito</i> (WESTRING, 1861)	1	–
LIOCRANIDAE		
<i>Agroeca cuprea</i> MENGE, 1873	–	6
LYCOSIDAE		
Lycosidae sp.	68	46
<i>Alopecosa</i> sp.	–	2
<i>Alopecosa accentuata</i> (LATREILLE, 1817)	1	–
<i>Alopecosa aculeata</i> (CLERCK, 1757)	1	–
<i>Alopecosa cuneata</i> (CLERCK, 1757)	3	3
<i>Alopecosa mariae</i> (DAHL, 1908)	3	–
<i>Alopecosa pulverulenta</i> (CLERCK, 1757)	3	4

<i>Aulonia albimana</i> (WALCKENAER, 1805)	70	29
<i>Hogna radiata</i> (LATREILLE, 1817)	5	1
<i>Lycosa</i> sp.	1	–
<i>Pardosa</i> sp.	–	1
<i>Pardosa agrestis</i> (WESTRING, 1861)	5	3
<i>Pardosa hortensis</i> (THORELL, 1872)	19	3
<i>Pardosa lugubris</i> (WALCKENAER, 1802)	1	–
<i>Pardosa nigra</i> (C.L. KOCH, 1834)	1	–
<i>Pardosa prativaga</i> (L. KOCH, 1870)	1	6
<i>Trochosa robusta</i> (SIMON, 1876)	2	–
<i>Trochosa ruricola</i> (DE GEER, 1778)	4	6
<i>Trochosa terricola</i> THORELL, 1856	3	9
<i>Xerolycosa miniata</i> (C.L. KOCH, 1834)	2	2
MIMETIDAE		
<i>Ero furcata</i> (VILLERS, 1789)	1	5
PHILODROMIDAE		
<i>Thanatus arenarius</i> L. KOCH, 1872	1	4
SALTICIDAE		
Salticidae sp.	–	8
<i>Euophrys</i> sp.	–	1
<i>Euophrys frontalis</i> (WALCKENAER, 1802)	4	4
<i>Evarcha arcuata</i> (CLERCK, 1757)	1	–
<i>Heliophanus flavipes</i> (HAHN, 1832)	1	–
<i>Myrmarachne formicaria</i> (DE GEER, 1778)	–	1
<i>Phlegra fasciata</i> (HAHN, 1826)	2	4
TETRAGNATHIDAE		
<i>Pachygnatha degeeri</i> SUNDEVALL, 1830	1	12
THERIDIIDAE		
Theridiidae sp.	1	–
<i>Enoplognatha thoracica</i> (HAHN, 1833)	1	1
<i>Episinus truncatus</i> LATREILLE, 1809	1	–
<i>Steatoda phalerata</i> (PANZER, 1801)	17	–
<i>Theridion varians</i> HAHN, 1833	–	1
THOMISIDAE		
Thomisidae sp.	3	–
<i>Ozyptila</i> sp.	14	2
<i>Ozyptila atomaria</i> (PANZER, 1801)	6	1
<i>Ozyptila brevipes</i> (HAHN, 1826)	–	1
<i>Ozyptila claveata</i> (WALCKENAER, 1837)	–	7
<i>Ozyptila praticola</i> (C.L. KOCH, 1837)	–	1
<i>Ozyptila scabricula</i> (WESTRING, 1851)	2	13
<i>Xysticus</i> sp.	5	6
<i>Xysticus acerbus</i> THORELL, 1872	3	2
<i>Xysticus cristatus</i> (CLERCK, 1757)	4	1
<i>Xysticus kochi</i> THORELL, 1872	17	12
TITANOECIDAE		
<i>Titanoeca schineri</i> L. KOCH, 1872	4	1
ZODARIIDAE		
<i>Zodarion rubidum</i> SIMON, 1914	200	332
ZORIDAE		
<i>Zora armillata</i> SIMON, 1878	–	1
<i>Zora spinimana</i> (SUNDEVALL, 1833)	–	1
ISOPODA (det. Ferenc Vilisics)		
TRICHONISCIDAE		
<i>Hyloniscus riparius</i> (KOCH, 1838)	8	2
PLATYARTHRIDAE		
<i>Platyarthus hoffmannseggii</i> BRANDT, 1833	1	–
CYLISTICIDAE		
<i>Cylisticus convexus</i> (DE GEER, 1778)	1	–

TRACHELIPODIDAE		
<i>Porcellium collicola</i> (VERHOEFF, 1907)	594	10
<i>Trachelipus rathkii</i> (BRANDT, 1833)	391	4
PORCELLIONIDAE		
<i>Porcellionides pruinosus</i> (BRANDT, 1833)	2	–
ARMADILLIDIIDAE		
<i>Armadillidium vulgare</i> (LATREILLE, 1804)	2452	134
COLLEMBOLA		
Collembola total	2890	3039
DERMAPTERA		
FORFICULIDAE		
<i>Forficula auricularia</i> LINNAEUS, 1758	4	–
ENSIFERA (det. Gergely Szövényi)		
GRYLLOIDEA		
GRYLLIDAE		
Gryllinae		
<i>Melanogryllus desertus</i> (PALLAS, 1771)	1	–
<i>Modicogryllus frontalis</i> (FIEBER, 1844)	–	1
CAELIFERA (det. Gergely Szövényi)		
ACRIDIDAE		
Gomphocerinae		
Gomphocerinae sp.	1	–
PSOCOPTERA		
Psocoptera sp. 1	2	–
THYSANOPTERA		
Thysanoptera total	19	10
HEMIPTERA		
HETEROPTERA (det. Dávid Rédei)		
CIMICOMORPHA		
CIMICOIDEA		
ANTHOCORIDAE		
<i>Xylocoris (Xylocoris) cursitans</i> (FALLÉN, 1807)	2	–
NABIDAE		
Nabinae		
<i>Himacerus (Aptus) mirmicoides</i> (O. COSTA, 1834)	–	1
<i>Nabis (Nabis) pseudoferus</i> REMANE, 1949 / <i>punctatus</i> A. COSTA, 1847 female	–	1
Prostemmaeinae		
<i>Prostemma (Prostemma) guttula guttula</i> (FABRICIUS, 1787)	1	–
MIROIDEA		
MIRIDAE		
Miridae sp. nymph	1	–
Mirinae		
<i>Myrmecoris gracilis</i> (R.F. SAHLBERG, 1848)	2	–
Orthotylinae		
<i>Halticus luteicollis</i> (PANZER, 1804)	–	1
TINGOIDEA		
TINGIDAE		
Tinginae		
<i>Acalypta gracilis</i> (FIEBER, 1844)	–	2
<i>Derephysia (Derephysia) foliacea</i> (FALLÉN, 1807)	2	–
<i>Kalama tricornis</i> (SCHRANK, 1801)	–	28
<i>Oncochila scapularis</i> (FIEBER, 1844)	–	2
PENTATOMOMORPHA		
COREOIDEA		
ALYDIDAE		
Alydinae		
<i>Alydus calcaratus</i> (LINNAEUS, 1758)	1	2
COREIDAE		
Pseudophloeinae		

<i>Bathysolen nubilus</i> (FALLÉN, 1807)	–	1
<i>Nemocoris fallenii</i> R.F. SAHLBERG, 1848	–	1
RHOPALIDAE		
Rhopalinae		
<i>Stictopleurus</i> sp.	–	1
STENOCEPHALIDAE		
<i>Dicranocephalus agilis</i> (SCOPOLI, 1763)	1	–
LYGAEOIDEA		
LYGAEIDAE		
Lygaeidae sp. nymph	–	1
Blissinae		
<i>Dimorphopterus doriae</i> (FERRARI, 1874)	82	14
<i>Dimorphopterus spinolae</i> (SIGNORET, 1857)	–	8
Orsillinae		
<i>Nysius helveticus</i> (HERRICH-SCHÄFFER, 1850)	1	–
Rhyparochrominae		
<i>Beosus maritimus</i> (SCOPOLI, 1763)	1	–
<i>Beosus quadripunctatus</i> (MÜLLER, 1766)	–	1
<i>Megalonotus sabulicola</i> (THOMSON, 1870)	3	–
<i>Peritrechus gracilicornis</i> PUTON, 1877	–	2
<i>Peritrechus nubilus</i> (FALLÉN, 1807)	–	1
<i>Plinthisus (Plinthisomus) pusillus</i> (SCHOLTZ, 1847)		1
<i>Rhyparochromus pini</i> (LINNAEUS, 1758)	1	–
<i>Rhyparochromus vulgaris</i> (SCHILLING, 1829)		1
<i>Scolopostethus decoratus</i> (HAHN, 1833)	–	4
PYRRHOCORIDAE		
<i>Pyrrhocoris apterus</i> (LINNAEUS, 1758)	1	2
PENTATOMOIDEA		
CYDNIDAE		
Sehirinae		
<i>Tritomegas bicolor</i> (LINNAEUS, 1758)	–	2
PENTATOMIDAE		
Pentatominae		
<i>Aelia acuminata</i> (LINNAEUS, 1758)	1	–
<i>Sciocoris (Sciocoris) cursitans</i> (FABRICIUS, 1794)	–	2
<i>Sciocoris (Sciocoris) sulcatus</i> FIEBER, 1851	–	2
Podopinae		
<i>Podops (Podops) inuncta</i> (FABRICIUS, 1775)	1	5
SCUTELLERIDAE		
Eurygastrinae		
<i>Eurygaster maura</i> (LINNAEUS, 1758)	1	–
Odontoscelinae		
<i>Odontoscelis (Odontoscelis) fuliginosa</i> (LINNAEUS, 1761)	4	–
AUCHENORRHYNCHA (det. András Orosz)		
FULGOROMORPHA		
CIXIIDAE		
Cixiinae		
Cixiinae sp.	4	1
DELPHACIDAE		
Delphacidae sp.	1	2
Delphacinae		
<i>Muellerianella</i> sp.	–	8
CICADOMORPHA		
MEMBRACOIDEA		
CICADELLIDAE		
Cicadellidae sp.	7	17
Agalliinae		
<i>Agallia</i> sp.	1	2
Aphrodinae		

<i>Anoscopus</i> sp.	3	10
<i>Anoscopus albiger</i> (GERMAR, 1821)	–	1
<i>Anoscopus flavostriatus</i> (DONOVAN, 1799)	8	16
<i>Anoscopus serratulae</i> (FABRICIUS, 1775)	5	10
<i>Aphrodes bicinctus</i> (SCHRANK, 1776)	1	1
Deltocephalinae		
<i>Arocephalus (Arocephalus) languidus</i> (FLOR, 1861)	1	–
<i>Artianus interstitialis</i> (GERMAR, 1821)	1	–
<i>Errastunus ocellaris</i> (FALLÉN, 1806)	–	1
<i>Jassargus (Obtujargus) obtusivalvis</i> (KIRSCHBAUM, 1868)	1	1
<i>Psammotettix</i> sp.	–	3
<i>Recilia</i> sp.	1	4
<i>Streptanus aemulans</i> (KIRSCHBAUM, 1868)	–	1
Typhlocybinae		
<i>Forcipata</i> sp.	–	1
ULOPIDAE		
<i>Ulopa</i> sp.1	–	1
STERNORRCHYNCHA		
APHIDOIDEA		
APHIDIDAE		
Aphididae total	65	213
COLEOPTERA		
Coleoptera sp. larva 1	2	–
Coleoptera sp. larva 3	4	12
Coleoptera sp. larva 4	1	–
Coleoptera sp. larva 6	1	3
Coleoptera sp. larva 7	–	6
ADEPHAGA (det. Győző Szél)		
CARABOIDEA		
CARABIDAE		
Carabidae sp. larva	8	1
Brachininae		
Brachinini		
<i>Brachinus (Brachinus) crepitans</i> (LINNAEUS, 1758)	–	1
<i>Brachinus (Brachynidius) explodens</i> DUFTSCHMID, 1812	–	1
Carabinae		
Carabini		
<i>Carabus (Megodontus) germarii</i> STURM, 1815	5	2
<i>Carabus (Procrustes) coriaceus</i> LINNAEUS, 1758	4	13
Notiophilini		
<i>Notiophilus laticollis</i> CHAUDOIR, 1850	–	2
Trechini		
<i>Trechus (Trechus) quadristriatus</i> (SCHRANK, 1781)	3	–
Pterostichini		
<i>Poecilus (Poecilus) cupreus</i> (LINNAEUS, 1758)	–	1
Platynini		
<i>Anchomenus (Anchomenus) dorsalis</i> (PONTOPPIDAN, 1763)	–	21
Sphodrini		
<i>Calathus (Calathus) fuscipes</i> (GOEZE, 1777)	29	30
<i>Calathus (Neocalathus) ambiguus</i> (PAYKULL, 1790)	–	2
<i>Calathus (Neocalathus) cinctus</i> MOTSCHULSKY, 1850	8	–
<i>Calathus (Neocalathus) erratus</i> (C. R. SAHLBERG, 1827)	–	26
<i>Calathus (Neocalathus) melanocephalus</i> (LINNAEUS, 1758)	24	5
Zabrini		
<i>Amara (Amara) aenea</i> (DE GEER, 1774)	2	2
<i>Amara (Amara) communis</i> (PANZER, 1797)	–	1
Harpalini		
<i>Harpalus (Harpalus) affinis</i> (SCHRANK, 1781)	–	1
<i>Harpalus (Harpalus) albanicus</i> REITTER, 1900	–	2

<i>Harpalus (Harpalus) anxius</i> (DUFTSCHMID, 1812)	–	3
<i>Harpalus (Harpalus) latus</i> (LINNAEUS, 1758)	–	1
<i>Harpalus (Harpalus) pumilus</i> STURM, 1818	–	1
<i>Harpalus (Harpalus) rubripes</i> (DUFTSCHMID, 1812)	122	12
<i>Harpalus (Harpalus) serripes</i> (QUENSEL IN SCHÖNHERR, 1806)	–	1
<i>Harpalus (Harpalus) subcylindricus</i> DEJEAN, 1829	–	9
<i>Harpalus (Harpalus) tardus</i> (PANZER, 1797)	2	2
<i>Harpalus (Pseudoophonus) rufipes</i> (DE GEER, 1774)	3	1
<i>Ophonus (Hesperophonus) azureus</i> (FABRICIUS, 1775)	3	–
<i>Ophonus (Hesperophonus) cribricollis</i> (DEJEAN, 1829)	3	–
<i>Ophonus (Metophonus) puncticeps</i> STEPHENS, 1828	1	1
<i>Ophonus (Metophonus) rufibarbis</i> (FABRICIUS, 1792)	–	1
<i>Bradycellus (Bradycellus) caucasicus</i> (CHAUDOIR, 1846)	–	1
Licinini		
<i>Badister (Badister) lacertosus</i> STURM, 1815	1	–
<i>Licinus (Licinus) depressus</i> (PAYKULL, 1790)	1	–
Panagaeini		
<i>Panagaeus (Panagaeus) bipustulatus</i> (FABRICIUS, 1775)	1	1
Lebiini		
<i>Paradromius (Manodromius) linearis</i> (OLIVIER, 1795)	–	2
<i>Philorhizus notatus</i> (STEPHENS, 1827)	1	3
<i>Microlestes maurus</i> (STURM, 1827)	1	–
<i>Syntomus pallipes</i> (DEJEAN, 1825)	1	1
POLYPHAGA (det. Ottó Merkl)		
HYDROPHILOIDEA		
HYDROPHILIDAE		
Helophorinae		
<i>Helophorus</i> sp.1	3	13
HISTERIDAE		
Histerinae		
<i>Hister quadrimaculatus</i> LINNAEUS, 1758	9	–
STAPHYLINOIDEA		
LEIODIDAE		
Cholevinae		
<i>Catops</i> sp.1	2	1
<i>Catops fuliginosus</i> ERICHSON, 1837	2	–
<i>Choleva (Choleva) sturmi</i> BRISOUT, 1863	–	1
<i>Nargus (Nargus) velox</i> (SPENCE, 1815)	–	24
<i>Ptomaphagus (Ptomaphagus) sericatus</i> (CHAUDOIR, 1845)	–	1
SCYDMAENIDAE		
Scydmaenidae sp. 1	–	1
Scydmaenidae sp. 2	–	3
SILPHIDAE		
Silphinae		
<i>Ablattaria laevigata</i> (FABRICIUS, 1775)	8	4
<i>Silpha</i> spp. larva	36	104
<i>Silpha carinata</i> HERBST, 1783	44	105
<i>Silpha obscura</i> LINNAEUS, 1758	5	107
STAPHYLINIDAE		
<i>Ocypus olens</i> (O. MÜLLER, 1764)	63	6
Staphylinidae others total	308	275
SCARABAEOIDEA		
LUCANIDAE		
<i>Dorcus parallelipedus</i> (LINNAEUS, 1758)	–	1
GEOTRUPIDAE		
Geotrupinae		
<i>Geotrupes spiniger</i> (MARSHAM, 1802)	–	1
SCARABAEIDAE		
Scarabaeinae		

<i>Onthophagus (Palaeonthophagus) ovatus</i> (LINNAEUS, 1767)	1	2
Melolonthinae		
<i>Amphimallon assimile</i> (HERBST, 1790)	–	1
BYRRHOIDEA		
BYRRHIDAE		
Byrrhinae		
<i>Simplocaria (Simplocaria) semistriata</i> (FABRICIUS, 1794)	7	1
ELATEROIDEA		
CANTHARIDAE		
Cantharinae		
Cantharidae sp. larva	24	76
DRILIDAE		
<i>Drilus concolor</i> AHRENS, 1812 larva	39	11
ELATERIDAE		
<i>Agriotes sputator</i> (LINNAEUS, 1758)	1	–
<i>Agrypnus murinus</i> (LINNAEUS, 1758)	4	–
<i>Drasterius bimaculatus</i> (ROSSI, 1790)	30	323
LAMPYRIDAE		
<i>Lampyris noctiluca</i> (LINNAEUS, 1767)	–	49
BOSTRICHOIDEA		
DERMESTIDAE		
<i>Anthrenus</i> sp.1	1	–
<i>Dermestes (Dermestinus) lanarius</i> ILLIGER, 1801	57	1235
CLEROIDEA		
MALACHIIDAE		
Malachiinae		
Malachiidae sp. larva 3	2	7
CUCUJOIDEA		
COCCINELLIDAE		
Coccinellidae sp. larva 1	1	2
Coccidulinae		
<i>Rhyzobius chrysoloides</i> (HERBST, 1792)	–	1
Coccinellinae		
<i>Propylea quatuordecimpunctata</i> (LINNAEUS, 1758)	1	–
<i>Tythaspis sedecimpunctata</i> (LINNAEUS, 1758)	2	–
Scymninae		
<i>Nephus</i> sp. 1	1	2
<i>Nephus</i> sp. 2	–	1
<i>Scymnus (Pullus) subvillosus</i> (GOEZE, 1777)	–	1
<i>Scymnus (Scymnus) rubromaculatus</i> (GOEZE, 1778)	1	1
CORYLOPHIDAE		
Corylophinae		
<i>Corylophus</i> sp. 1	5	11
Orthoperinae		
<i>Orthoperus</i> sp. 1	4	–
<i>Orthoperus</i> sp. 2	–	1
CRYPTOPHAGIDAE		
Cryptophagidae sp. 2	1	–
Cryptophagidae sp. 3	1	1
Atomariinae		
<i>Atomaria</i> sp.1	2	–
<i>Atomaria</i> sp.3	1	–
Cryptophaginae		
<i>Cryptophagus</i> sp. 1	5	3
<i>Cryptophagus</i> sp. 2	–	2
LATRIDIIDAE		
Latridiidae sp. 2	–	2
Latridiidae sp. 6	1	–
Latridiidae sp. 7	5	11

TENEBRIONOIDEA		
ANTHICIDAE		
Anthicinae		
Anthicinae sp. 1	–	1
Anthicinae sp. 2	–	1
<i>Hirticollis hispidus</i> (ROSSI, 1792)	4	–
SCRAPTIIDAE		
Anaspidinae		
<i>Anaspis</i> sp.2	–	1
TENEBRIONIDAE		
Tenebrionidae sp. larva 1	2	–
Lagriinae		
<i>Lagria hirta</i> (LINNAEUS, 1758)	19	136
Diaperinae		
<i>Crypticus quisquilius</i> (LINNAEUS, 1761)	55	42
Tenebrioninae		
<i>Gonocephalum granulatum pusillum</i> (FABRICIUS, 1791)	11	–
<i>Melanimon tibiale tibiale</i> (FABRICIUS, 1781)	2	–
CHRYSOMELOIDEA		
CHRYSOMELIDAE (det. Gábor Pozsgai)		
Chrysomelidae sp. larva 1	1	2
Clytrinae		
Clytrinae sp. larva 1	15	51
Cryptocephalinae		
<i>Cryptocephalus (Burlinius) ochroleucus</i> FAIRMAIRE, 1859	2	–
Galerucinae		
<i>Galeruca (Eumarhopa) rufa</i> GERMAR, 1824	6	–
<i>Galeruca (Galeruca) tanacetii</i> (LINNAEUS, 1758)	83	4
Alticinae		
<i>Chaetocnema hortensis</i> (GEOFFROY, 1785)	1	1
<i>Longitarsus pratensis</i> (PANZER, 1794)	1	1
<i>Longitarsus symphyti</i> HEIKERTINGER, 1912	5	–
<i>Neocrepidodera ferruginea</i> (SCOPOLI, 1763)	15	4
CURCULIONOIDEA (det. Attila Podlussány)		
APIONIDAE		
Apioninae		
<i>Stenopterapion (Stenopterapion) meliloti</i> (W. KIRBY, 1808)	–	2
CURCULIONIDAE		
Curculionidae sp. larva 1	1	1
Curculionidae sp. larva 2	–	1
Curculionidae sp. larva 3	3	–
Baridinae		
<i>Aulacobaris lepidii</i> (GERMAR, 1824)	1	2
Ceutorhynchinae		
<i>Ceutorhynchus</i> sp. 1	–	1
<i>Rhinoncus pericarpus</i> (LINNAEUS, 1758)	–	1
<i>Trichosirocalus troglodytes</i> (FABRICIUS, 1787)	–	1
Curculioninae		
<i>Dorytomus (Olamus) rufatus</i> (BEDEL, 1888)	–	6
<i>Tychius (Tychius) meliloti</i> STEPHENS, 1831	1	–
Entiminae		
<i>Brachysomus setiger</i> (GYLLENHAL, 1840)	16	214
<i>Graptus triguttatus</i> (FABRICIUS, 1775)	–	1
<i>Otiorhynchus (Arammichnus) brunneus</i> KRYNICKI, 1834	1	4
<i>Otiorhynchus (Arammichnus) velutinus</i> GERMAR, 1824	3	1
<i>Otiorhynchus (Choilisanus) raucus</i> (FABRICIUS, 1777)	12	17
<i>Otiorhynchus (Pendragon) ovatus</i> (LINNAEUS, 1758)	7	11
<i>Otiorhynchus (Zustalestus) rugosostriatus</i> (GOEZE, 1777)	7	11
<i>Parafoucartia squamulata</i> (HERBST, 1795)	–	2

<i>Phyllobius (Phyllobius) vespertinus</i> (FABRICIUS, 1792)	–	1
<i>Sitona (Sitona) humeralis</i> STEPHENS, 1831	–	2
<i>Sitona (Sitona) puncticollis</i> STEPHENS, 1831	2	–
<i>Stomodes gyrosicollis</i> BOHEMAN, 1843	–	12
<i>Tanymecus (Tanymecus) palliatus</i> (FABRICIUS, 1787)	–	1
<i>Trachyphloeus (Trachyphloeus) frivaldszkyi</i> KUTHY, 1887	–	28
<i>Trachyphloeus (Trachyphloeus) inermis</i> BOHEMAN, 1843	–	3
Hyperinae		
<i>Hypera (Hypera) postica</i> (GYLLENHAL, 1813)	1	–
Lixinae		
<i>Cyphocleonus dealbatus</i> (GMELIN, 1790)	1	–
<i>Mecaspis alternans</i> (HERBST, 1795)	1	1
DRYOPHTHORIDAE		
Rhynchophorinae		
<i>Sphenophorus striatopunctatus</i> (GOEZE, 1777)	2	1
NEUROPTERA		
Neuroptera sp. larva 1	1	–
HYMENOPTERA		
SYMPHYTA		
TENTHREDINIDAE		
Tenthredinidae sp. larva 1	1	–
APOCRITA		
ICHNEUMONOIDEA		
Ichneumonoidea total	39	32
CYNIPOIDEA		
Cynipoidea total	9	8
CHALCIDOIDEA		
Chalcidoidea total	10	25
PROCTOTRUPOIDEA		
Proctotrupoidea total	157	284
CHRYSIDOIDEA		
Chrysoidea total	1	–
VESPOIDEA		
MUTILLIDAE		
Mutillidae sp. 1	2	–
FORMICIDAE (det. Csaba Nagy, Sándor Csősz)		
Ponerinae		
<i>Ponera coarctata</i> (LATREILLE, 1802)	2	–
Myrmicinae		
<i>Myrmica sabuleti</i> MEINERT, 1861	111	1
<i>Myrmica schencki</i> VIERECK, 1903	2	6
<i>Myrmica specioides</i> BONDROIT, 1918	2	21
<i>Myrmecina graminicola</i> (LATREILLE, 1802)	–	3
<i>Pyramica bauduerei</i> (EMERY, 1875)	–	1
<i>Solenopsis fugax</i> LATREILLE, 1798	73	83
<i>Temnothorax crassispinus</i> (KARAVAJEV, 1926)	2	437
<i>Tetramorium</i> cf. <i>caespitum</i> (LINNAEUS, 1758)	599	112
Dolichoderinae		
<i>Bothriomyrmex meridionalis</i> (ROGER, 1863)	1	–
<i>Tapinoma ambiguum</i> EMERY, 1925	200	–
Formicinae		
<i>Camponotus (Myrmentoma) fallax</i> (NYLANDER, 1856)	1	–
<i>Camponotus (Myrmentoma) lateralis</i> (OLIVIER, 1792)	1	–
<i>Formica (Raptiformica) sanguinea</i> LATREILLE, 1798	757	–
<i>Formica (Serviformica) cunicularia</i> LATREILLE, 1798	27	–
<i>Formica (Serviformica) rufibarbis</i> FABRICIUS, 1793	330	85
<i>Lasius (Chthonolasius) sp.</i>	2	5
<i>Lasius (Dendrolasius) fuliginosus</i> (LATREILLE, 1798)	4	25
<i>Lasius (Lasius) neglectus</i> VAN LOON, BOOMSMA & ANDRÁSFALVY, 1990	851	43744

<i>Lasius (Lasius) niger</i> (LINNAEUS, 1758)	432	1
<i>Lasius (Lasius) paralienus</i> SEIFERT, 1992	1	1
<i>Plagiolepis pygmaea</i> (LATREILLE, 1798)	33	–
POMPILIDAE		
Pompilidae sp. 1	6	–
APOIDEA		
Apoidea total	4	–
LEPIDOPTERA		
Lepidoptera larva total	25	54
Lepidoptera adult total	2	5
DIPTERA		
Diptera sp. larva 1	1	1
Diptera sp. larva 2	2	–
Diptera sp. larva 3	–	6
Diptera sp. larva 5	3	–
Diptera sp. larva 7	–	1
Diptera sp. larva 8	–	4
Diptera sp. larva 9	7	6
BRACHYCERA		
Brachycera total	160	244
NEMATOCERA		
Nematocera total	107	208
SIPHONAPTERA		
Siphonaptera sp. 1	–	2